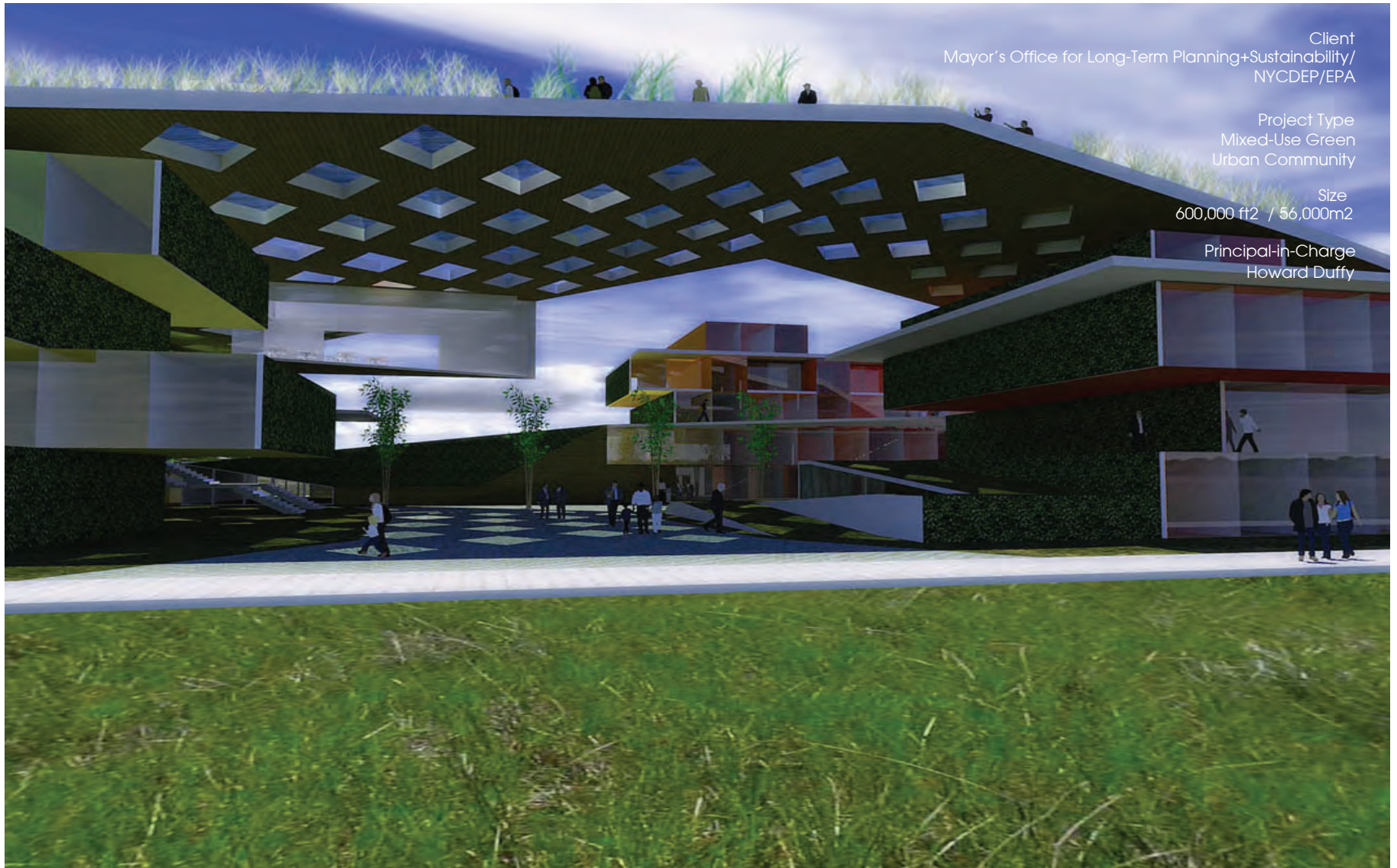


Global Sustainability

Prototype urban community that creates a rich neighborhood environment on one city block. Mixed-use features include multi-income pre-fab housing, community/daycare facilities, retail, a public theatre as well as a canopy roof garden that enables neighborhood to grow, share and market their own fresh produce. Wind, geothermal and solar powered energy system.

plāNYC2030:HYPERLOCALCOMMUNITYFOR GLOBALAPPLICATIONS



Client
Mayor's Office for Long-Term Planning+Sustainability/
NYCDEP/EPA

Project Type
Mixed-Use Green
Urban Community

Size
600,000 ft² / 56,000m²

Principal-in-Charge
Howard Duffy

All Images ©1999-2008 HTDSTUDIO DESIGNOFFICE™ All Rights Reserved - For publishing permission email press@htdstudio.net

HTDSTUDIO
DESIGN
OFFICE™