



# OCULUS

10

After the Gowanus  
Competition

11

Discussing  
Downsview Park

13

Building Consensus  
on Midtown West

18

Talking About  
Pragmatism

REESTABLISHING PRIORITIES: **THE NEW PRACTICALITY**



Architectural rendering by Tom Schaller

**Have Faith**

**F**or a youth-oriented congregation, **Weisz+Yoes** has designed a rambunctious new church in place of an existing industrial building located at the corner of Liberty and Bedford avenues in East New York. The 29,000 square-foot project will house Love Fellowship Tabernacle—headed by pastor Hezekiah Walker—which counts rap superstars Puff Daddy and Li'l Kim among its members. An abstracted exterior, to be clad with a combination of zinc, dark granite and structural-channel glass, will be marked by the graphic elements of a spire, a glazed dormer, and an entry slot. A slice in the building volume should reveal the interior. Weisz+Yoes has designed a long-span structural system so that the 1,200-seat sanctuary will be free of columns. The church balcony will be suspended from rods tied to the trusses above, and the baptistry will be an acid-etched cube suspended over the Grammy-winning choir. Full video, sound, and theatrical lighting—including two large monitors flanking the baptistry—will electrify services. Project cost has been withheld at the clients' request.

□ **Howard Duffy, of HTDstudio** invoked the hermetic spaces and compartmentalization of traditional Coptic churches in an elaborate scheme proposed for The New Millennium Coptic Church Design Competition. The concrete shell of his main church implies a pair of praying hands, symbolizing faith, while the chapel evokes cupped hands cradling worshippers.

The proposal for the Virgin Mary & St. Pakhomious Coptic Orthodox Church conceives of the complex as a

multiuse, community-oriented place for Rockland County. The expansive complex meanders throughout the site. Drivers enter the relatively narrow, sloped area from the east, passing the educational center and gymnasium. From beneath the chapel, the road emerges into the "sacred" portion of the site. To the west of the complex, a steep slope provides a virtual "gateway" where one enters the main church.

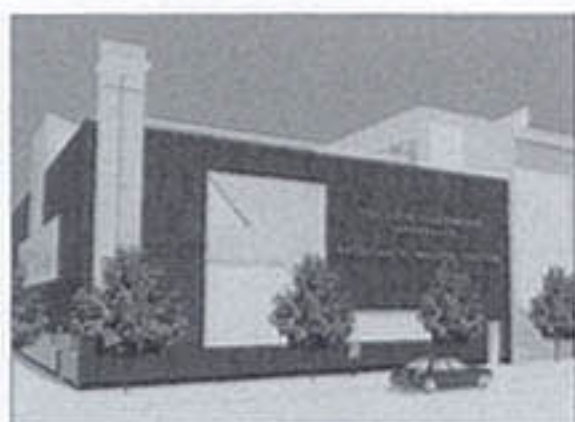
Passive air circulation and sun collection systems were devised to maximize energy efficiency and building performance over time. These systems are key, because the educational center and gymnasium will be in operation virtually year-round in tandem with everyday church services.

□ Construction continues on **Hardy Holzman Pfeiffer Associates'** \$38 million reconstruction/restoration of the burned-out 1870s Central Synagogue building in Manhattan. Only the ark, most of the bema (a raised platform used to stage readings of the Torah), and several wooden pews were salvageable. Alternating bands of red and charcoal slate shingles—a detail missing for many years—have been installed atop the roof, now held aloft on six heavy-timber trusses. (Timber was used rather than steel because wood trusses can better withstand fire.)

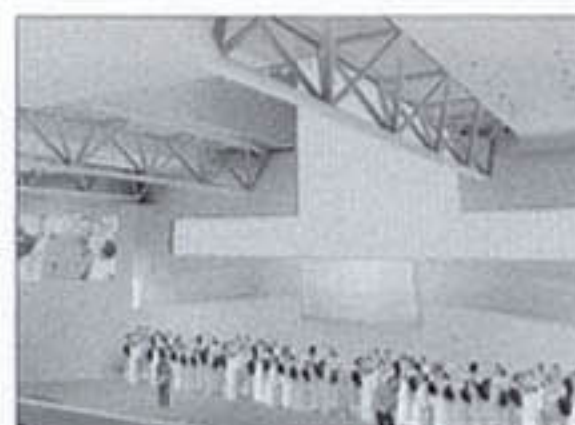
Interior work includes recreation of the elaborate decorative paint schemes, plaster and woodwork, encaustic tile floors, and stained glass windows, along with new furnishings and light fixtures. In addition, the lower level is being reconstructed to house a multipurpose space for services, receptions, concerts, and other events. The synagogue is expected to reopen next fall.

□ To be completed this year, a \$3.6 million, 23,000-square-foot interior redesign by **Pasanella+Klein Stolzman+Berg** is under way at a synagogue in Larchmont, New York. Besides reorganizing and integrating their three interconnected buildings, the Larchmont Temple wanted to renovate the sanctuary and social spaces. Because services at the temple vary greatly in attendance—from under 100 for weddings to over 400 on the High Holy Days—a moveable, bronze-laced wall has been designed to allow three different sanctuary seating plans. The ark and bema have been placed in the center (with provisions for sometimes relocating the choir and organ) in order to enhance the sense of community and bring the clergy closer to the congregants. The ark is made of bronze, and the doors and Everlasting Light are from the original sanctuary. Original antique oil lamps have also been retained. Sanctuary walls of Jerusalem stone display liturgical instruments. The bema design is taken from Exodus: "He made horns for it on its four corners, and he overlaid it with bronze."

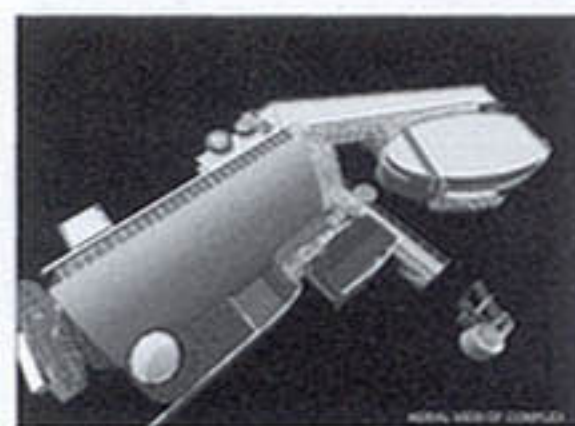
After many drab years on East 87th Street, the landmark Park Avenue Synagogue is being quietly burnished and rejuvenated in phases by the same architect. The grand sanctuary, with its dramatic skylight, pendant luminaires, and memorial windows, belongs to a conservative congregation, so the architects' design approach was respectful of the history and sentiment associated with the existing space. During the \$1 million campaign, a light hand was used to polish and embellish elements currently in place. The focus was on selective details: improve-



*Love Fellowship Tabernacle, Weisz+Yoes*



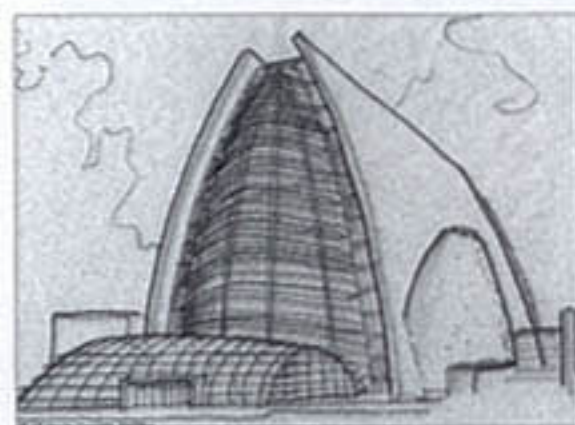
*Love Fellowship Tabernacle, Weisz+Yoes*



*Virgin Mary & St. Pakhomious Coptic Orthodox Church, HTDstudio*



*Virgin Mary & St. Pakhomious Coptic Orthodox Church, Education Center, HTDstudio*



*Virgin Mary & St. Pakhomious Coptic Orthodox Church, HTDstudio*